

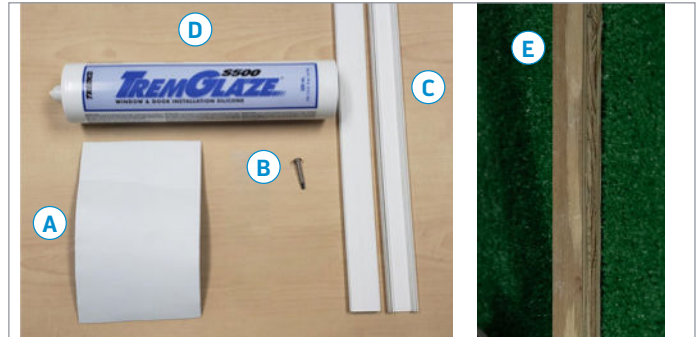
Advantage Series Field Mull Instructions

Required Tools:

- Tape Measure
- Hammer
- Phillips Screwdriver
- 5/32" Drill Bit
- Sealant Gun
- Silicone Sealant "Window and Door"
- Utility Knife
- Rubber Mallet
- Marker or Pencil
- Personal Protective Equipment

Parts List:

- A. Flashing Tape TAP060
- B. SCR592
- C. MULL COVER
- D. Silicone – Not Supplied
- E. Plywood Reinforcement



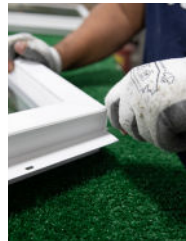
1.

1. Prepare the windows:

A. Lay out windows on a flat surface with interior side up in the intended mulling position. Place a mark on the nail fins that need to be removed where the mull joint will be.



B. Remove marked nail fin(s) by scoring with a utility knife. Bend the fin down then up to remove the fin from the frame.

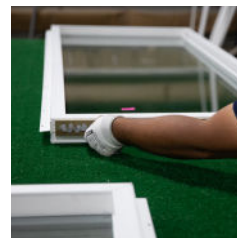


C. Where the nail fin was removed, square up the corners by removing excess vinyl weld from each corner. Do this for each end, interior and exterior of the window.



D. Use a Utility Knife to remove the end of the accessory track for the mull cover to snap into. Flip window over and do the exterior of window also. You may have to remove the whole corner if there is an intersecting mull at that corner or receiver is applied.

2.



A. With the window interior side up, apply silicone to the first frame without the nail fin. Next, place the plywood reinforcement with silicone applied to the opposite side against window frame centered along the length.

B. Align the second window to the first window with the plywood reinforcement.

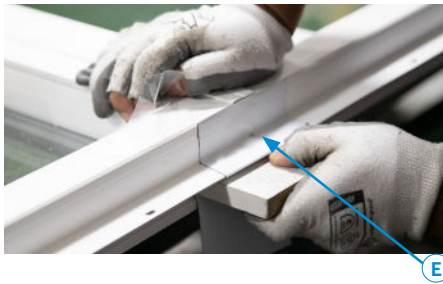
C. Place the Mull Cover over the two windows and align to the edge of the windows. Using a mallet, start by seating the cover into the accessory grooves about 6" in from the end, then work your way back and down the windows.

Advantage Series Field Mull Instructions



***If there is an intersecting mull, fill intersection with silicone before applying cover**

D. Fill both ends with silicone. Start by inserting the tip all the way between the plywood reinforcement and the mull cover. Then, force silicone up into the gap and backfill to the outside coving the plywood.



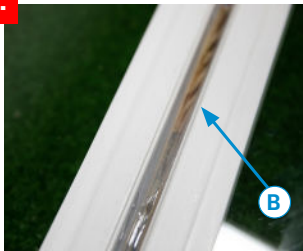
»-Then fill the rest of the cavity the same way all the way down to the bottom side of the plywood reinforcement.

E. Apply flashing tape (TAPO60), start with about 6" to cover the end and the silicone. Use a wood block to work the tape into all corners as you apply the tape. Continue to wrap the tape down and around the nail fin to the exterior side of the window.



»-Trim tape even with exterior.

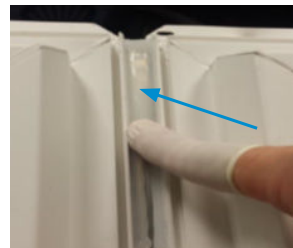
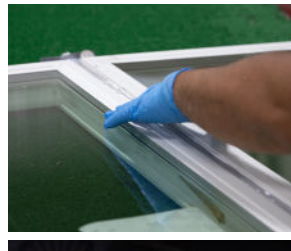
3.



3. Exterior Mullion Assembly

A. Carefully turn the window over to work on the exterior side.

B. To seal the outside of the mull. Apply a small bead of silicone the full length of the window in each corner where the plywood meets the vinyl.



»-Using glove or finger cot, tool silicone smooth across mull bar and into corners.



»-*If there is an intersecting mull, first fill cavity full of silicone, then down each side of the mull channel. Also, fill accessory groove about 1" in each direction. Finally, tool/smooth silicone in all directions.



C. Attach mull cover(s) the same way as the interior side.

D. Clean up an excess silicone and wipe down any other marks.

E. Remember to add any extra accessories that are required.